

# SCHOOL ISOLATION FLOW CHART

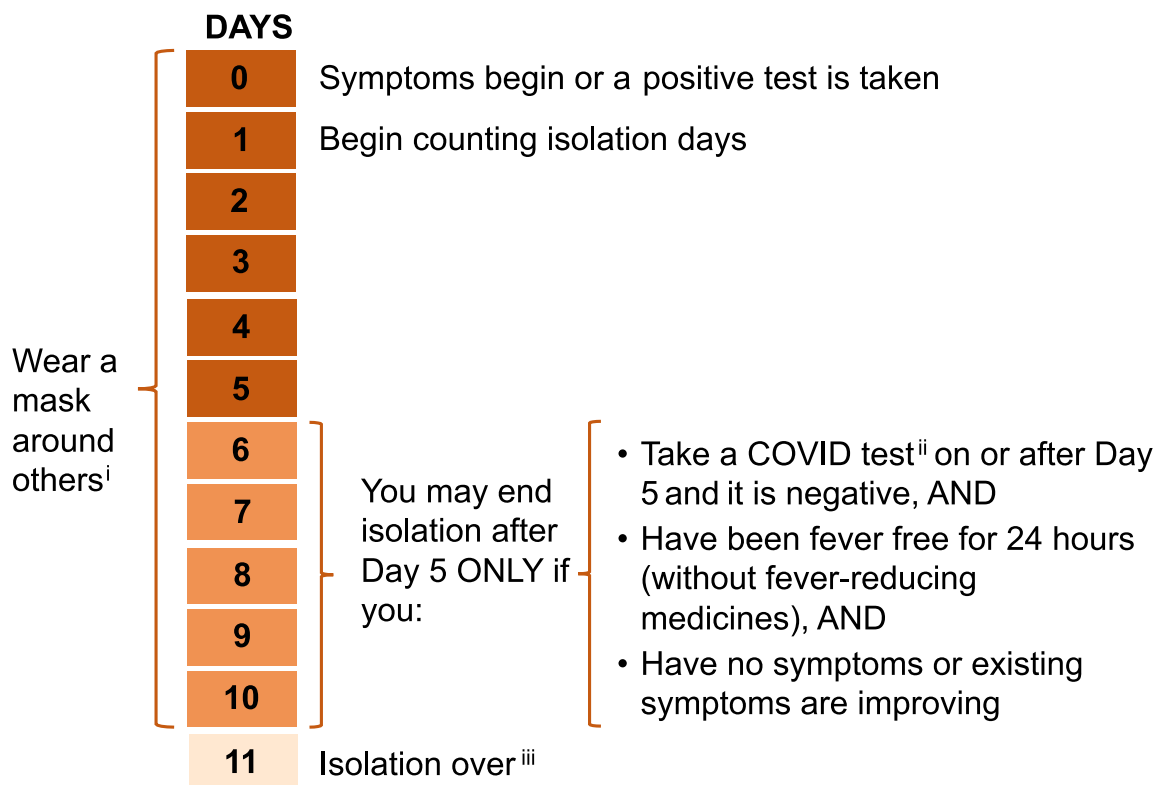
Have you tested positive for COVID-19?

no

You do not need to isolate

yes

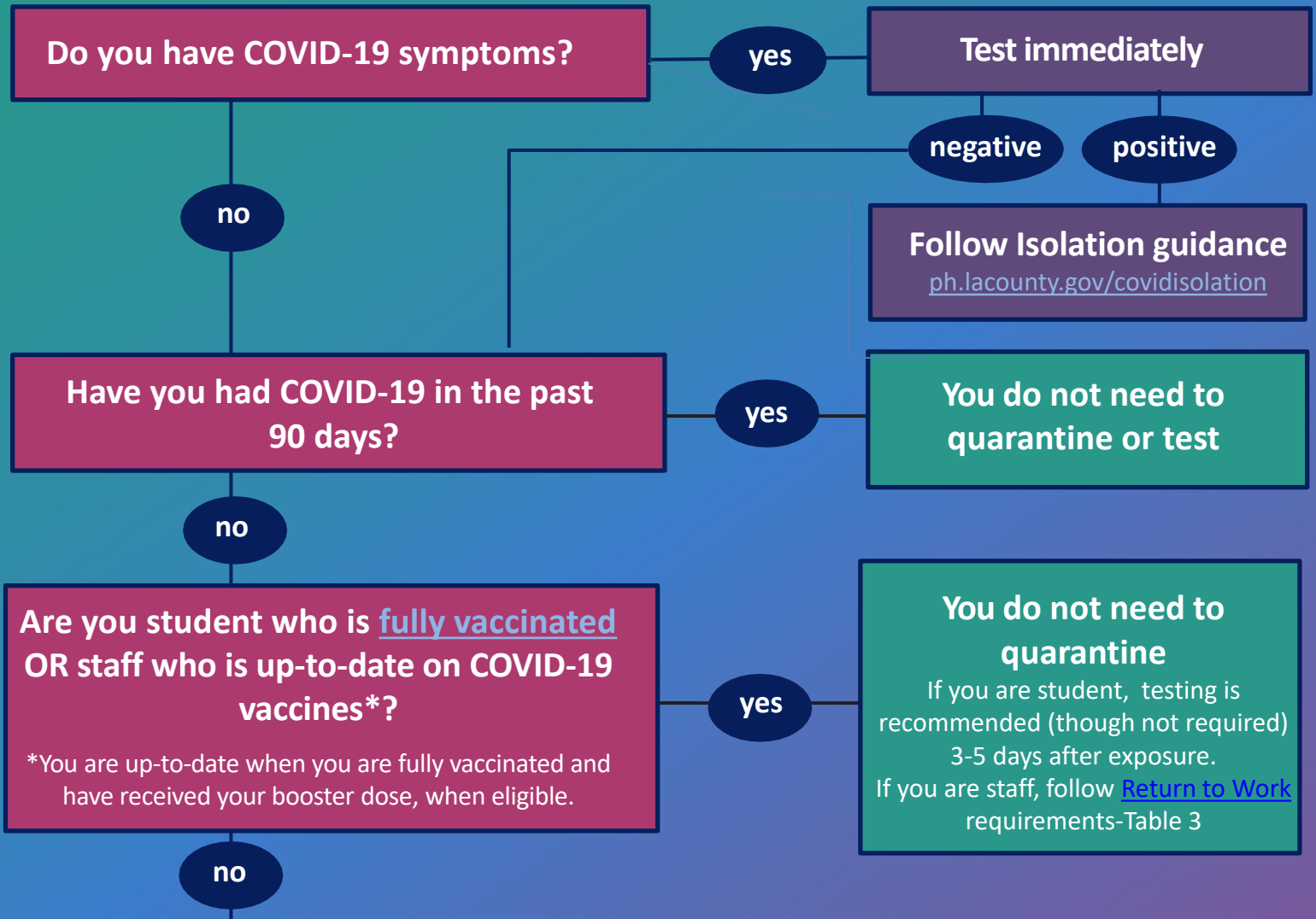
Stay home for at least 5 days, regardless of vaccination status, previous infection, or symptoms.



- When in isolation, you must wear a highly protective mask around others even in your own home. If you end isolation after Day 5, it is *strongly recommended* that you wear a mask through Day 10.
- Antigen test preferred.
- If you still have a fever or your other COVID-19 symptoms are not improving, stay in isolation & talk with your doctor. If you are immunocompromised or had severe COVID-19, you may need to isolate for longer. Talk with doctor about when you can be around others.

- Tell your close contacts that they have been exposed and need to follow instructions at [ph.lacounty.gov/covidquarantine](https://ph.lacounty.gov/covidquarantine)
- See full isolation instructions for people with COVID-19 at [ph.lacounty.gov/covidisolation](https://ph.lacounty.gov/covidisolation)

# INDIVIDUAL CONTACT TRACING FLOW CHART FOR SCHOOL EXPOSURES (Does not apply for community exposures)



## You must quarantine

**STAFF:** Some staff may continue to work if they meet criteria – follow [Return to Work](#) requirements-Table 2.

**STUDENTS:** If you remain symptom free, you may end your quarantine after either:

- 10 full days after the last date of exposure. Activities resume on Day 11
- OR
- 5 full days after the last date of exposure, if you have a negative viral test collected on or after Day 5. Activities may resume as early as Day 6.

**Students who are not fully vaccinated may remain in school and participate in school activities, including extracurricular activities and sports, if they meet the criteria below:**

- Both the infected person and exposed student wore a mask during the exposure period.
- The student does not have [symptoms](#) and continues to monitor for symptoms for 10 days. If they have symptoms, they should test immediately. If positive, follow isolation guidance at [ph.lacounty.gov/covidisolation](https://ph.lacounty.gov/covidisolation).
- The student should test at least once, on or around Day 5. If testing resources are available, testing twice is recommended, preferably immediately after notification of exposure and again on or around Day 5.
- The student should wear a [highly protective mask](#) when around others, except when eating or drinking, for 10 days after the last date of exposure.

For more information and to view the latest version, visit:

[ph.lacounty.gov/EducationToolkitTK12](https://ph.lacounty.gov/EducationToolkitTK12) 3/18/22

